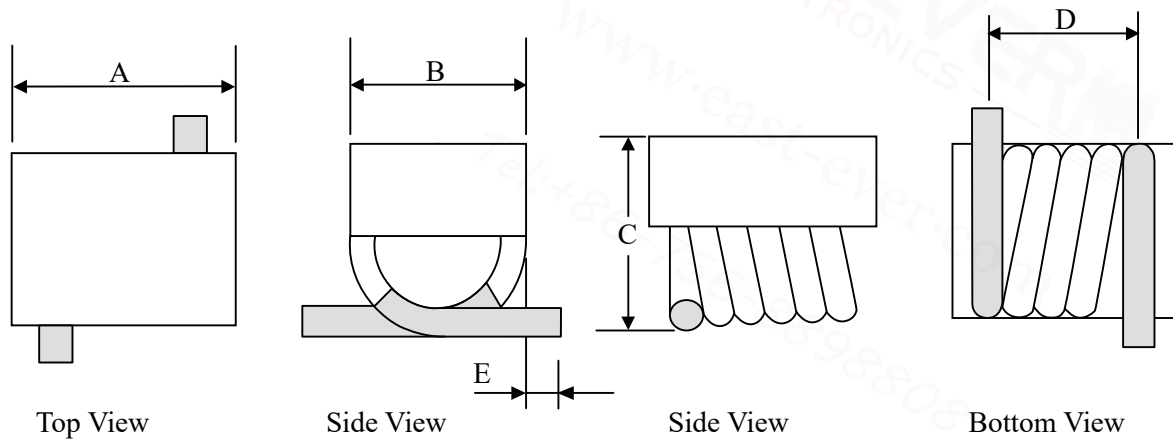


Air Core Coil Features

- Air core inductors feature high Q and current handling
- Acrylic top provides a flat surface for pick and place
- Solder coated leads ensure reliable soldering
- Operating temperature range: -40°C to $+125^{\circ}\text{C}$
- Storage temperature range: -55°C to $+145^{\circ}\text{C}$



Air Core Coil Inductor Dimensions & Configurations (Unit In mm)

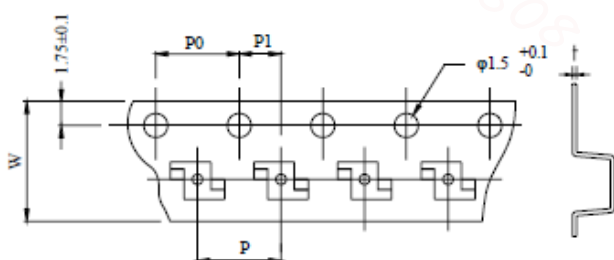


P/N Type	A	B	C	D	E
SMTAM2410	6.30 ± 0.3	3.00 ± 0.2	3.15 Max	5.80 ± 0.3	0.70 ± 0.2

Specification

Eastever	P/N	(A)Max (nH)	Q(min)	Test Freq (MHz)	DCR (mΩ)Max	SRF (GHz)	Coilcraft P/N	Würth P/N
SMTAM2410	- 17N5J	4.0 17.5	100	150	4.5	>2.2	B06T	744914117
SMTAM2410	- 22NJ	4.0 22.0	100	150	5.2	>2.0	B07T	744914122
SMTAM2410	- 28NJ	4.0 28.0	100	150	6.0	>1.8	B08T	744914128
SMTAM2410	- 35N5J	4.0 35.5	100	150	6.8	>1.2	B09T	744914135
SMTAM2410	- 43NJ	4.0 43.0	100	150	7.9	>1.0	B10T	744914143

Tape & Reel Information



Parameter	Units	Value
Qty per reel	PCS	2000
Reel Size	mm	330
Tape Width	mm	16.00
P	mm	8.00
Po	mm	4.00
P1	mm	2.00