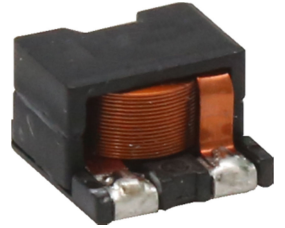


## Features

- Compact size using flat wire, and SMD type.  
扁平线小尺寸封装，贴片类型
- Low radiation noise by magnetically shielded construction  
闭合磁路封装，低辐射
- High current, Low resistance.  
大电流，低电阻
- Operating temperature : -40°C~+125°C.  
工作温度：-40°C~+125°C



## Applications

- high efficiency DC/DC converters. 高效 DC/DC 转换器
- Single and polyphase buck converters. 单相、多相降压转换器
- Filter for audio applications. 音频滤波应用
- Optimized for high current boost applications. 大电流升压应用优化

## Electrical characteristics

Part number 料号	Inductance 电感量 μH	DC resistance 直流电阻 mΩ max(typ.)	DC saturation current 直流饱和电流 A max(typ.)			Temperature rise current 温升电流 A max.	
			ΔL ≤ 10%	ΔL ≤ 20%	ΔL ≤ 30%	ΔT ≤ 20°C	ΔT ≤ 40°C
EEC106H-562	5.6 ± 20%	10.5(9.3)	4.0(5.0)	7.8(9.0)	10.5(12.3)	6.5	8.5
EEC106H-682	6.8 ± 20%	12.0(10.9)	3.5(4.4)	6.8(8.0)	9.8(11.8)	5.9	7.8
EEC106H-902	9.0 ± 20%	16.0(14.5)	3.2(4.0)	5.7(7.0)	9.1(10.2)	5.0	6.6
EEC106H-103	10.0 ± 20%	18.8(17.2)	3.0(3.8)	5.5(6.9)	9.0(10.0)	4.5	6.0
EEC106H-123	12.0 ± 20%	21.0(19.3)	2.4(3.1)	5.0(6.0)	7.2(8.2)	4.0	5.2
EEC106H-153	15.0 ± 20%	26.5(24.4)	2.0(2.9)	4.2(5.2)	6.5(7.3)	3.5	4.6
EEC106H-223	22.0 ± 20%	40.0(36.8)	2.0(2.5)	3.0(4.1)	5.2(6.0)	2.8	4.0

### Remark

- Inductance is measured with a LCR meter 4284A or equivalent.  
Test frequency at 100kHz
- DC resistance is measured with 16502 Milliohm Meter , or equivalent.  
Reference ambient temperature 25°C

### 备注

- 电感量测试采用 4284A 数字电桥或同等仪器：  
测试频率 100KHz
- 直流电阻测试采用 16502 毫欧表或同等仪器：  
环境温度 25°C

## Dimensions

