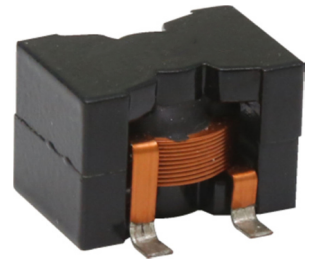


HIGH CURRENT POWER INDUCTOR 大电流功率电感 EEB20



Features

- Susing flat wire, and SMD type.
采用扁平线，贴片类型
- Low radiation noise by magnetically shielded construction
闭合磁路封装，低辐射
- High current, Low resistance.
大电流，低电阻
- Operating temperature : -40°C~+125°C.
工作温度：-40°C~+125°C



Applications

- high efficiency DC/DC converters. 高效 DC/DC 转换器
- Single and polyphase buck converters. 单相、多相降压转换器
- Filter for audio applications. 音频滤波应用
- Optimized for high current boost applications. 大电流升压应用优化

Electrical characteristics

Part number 料号	Inductance 电感量 μH	DC resistance 直流电阻 mΩ max. (typ.)	DC saturation current 直流饱和电流 A max.(typ.)			Temperature rise current 温升电流 A max.	
			ΔL ≤ 10%	ΔL ≤ 20%	ΔL ≤ 30%	ΔT ≤ 20°C	ΔT ≤ 40°C
EEB20-701	0.7 ± 20%	1.0(0.7)	70(75)	75(79)	77.5(81)	22	28
EEB20-152	1.5 ± 20%	1.3(1.05)	57(60)	60(63.5)	62(65.2)	21	26.5
EEB20-222	2.2 ± 20%	1.8(1.5)	48(51.5)	52(56)	53.5(57)	20	25
EEB20-332	3.3 ± 20%	2.5(2.1)	40(44)	45(47)	46.5(48)	18.5	23.5
EEB20-472	4.7 ± 20%	3.6(3.1)	30(34.5)	35(37)	36.5(38)	15.5	22
EEB20-682	6.8 ± 20%	6.8(5.2)	25(29.7)	30(32)	31.5(33)	13.5	19
EEB20-103	10 ± 10%	9.5(7.3)	18(22.8)	23(24.8)	24(25.6)	10	14
EEB20-153	15 ± 10%	10.5(8.7)	17(20.6)	21(22.5)	22(23.4)	9	12.5
EEB20-223	22 ± 10%	12.8(10.6)	12.5(15)	15(16.3)	15.8(17.1)	7	11
EEB20-333	33 ± 10%	13.7(11.5)	8.5(11)	11(12.1)	11.7(12.9)	6	10

Remark

- Inductance is measured with a LCR meter 4284A or equivalent.
Test frequency at 100kHz
- DC resistance is measured with 16502 Milliohm Meter , or equivalent.
Reference ambient temperature 25°C

备注

- 电感量测试采用 4284A 数字电桥或同等仪器：
测试频率 100KHz
- 直流电阻测试采用 16502 毫欧表或同等仪器：
环境温度 25°C

Dimensions

