

Power Splitter/Combiner

EDK6723-C023809

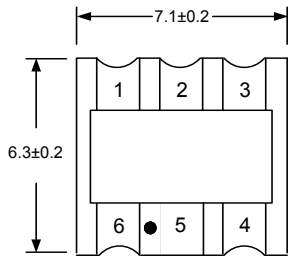
2022-11-16 Rev. 0



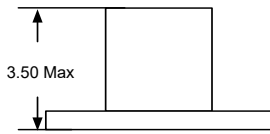
75Ω 2 Way-0° Power Divider

5-1200MHz

Outline Drawing(mm)

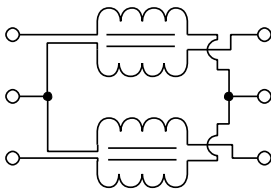


Top View

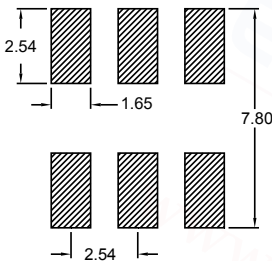


Electrical structure

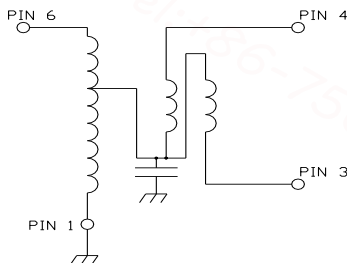
Fig K



Recommended layout(mm)



Electrical schematic



Pin Connections

SUM PORT	6
PORT 1	4
PORT 2	3
GROUND	1
Not connected (ground)	2,5

Features

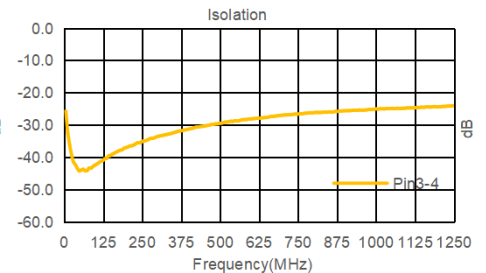
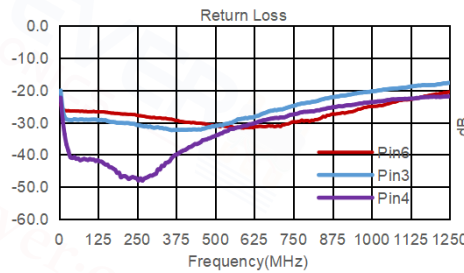
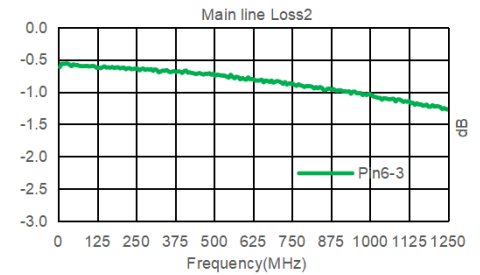
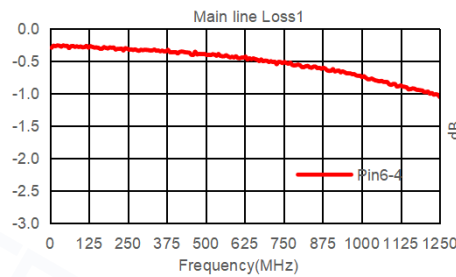
- Input Power: 0.25W Max
- DC Current: 30mA Max
- 260°C reflow compatible
- RoHS Compliant and Pb free
- Operating temperature range: -40°C to +85°C
- Storage temperature range: -55°C to +100°C

Applications

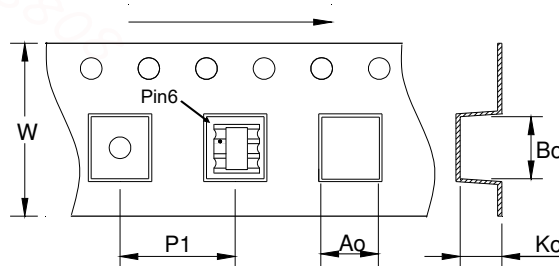
- For Dcscis 3.0&4.0 Cable Modem.
- For Wideband Push-pull Amplifiers.
- For CATV Amplifiers Module & Set top box.
- For CATV Optical Receivers and Amplifiers.
- For VHF/UHF Transmitters and Push-pull Amplifiers.

Electrical Specifications:TA=25°C, 0dBm, Z0=75Ω

Parameter	Test Conditions	Units	Min	Typ	Max
Main line Loss (Pin6-4)	5-1200MHz	dB	—	0.4	1.3
Main line Loss (Pin6-3)	5-1200MHz	dB	—	0.7	1.5
Input Return Loss(Pin6)	5-1200MHz	dB	20.0	28.0	—
Output Return Loss(Pin3)	5-1200MHz	dB	18.0	30.0	—
Output Return Loss(Pin4)	5-1200MHz	dB	20.0	35.0	—
Isolation(Pin3-4)	5-1200MHz	dB	23.0	35.0	—



Carrier Tape Orientation



Tape & Reel Information

Parameter	Units	Value
Qty per reel	PCS	1500
Reel Size	mm	330
Tape Width	mm	16.00
Pitch	mm	12.00
Ao	mm	6.20
Bo	mm	8.10
Ko	mm	3.80