

Power Splitter/Combiner

EDK1030-C001387

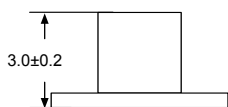
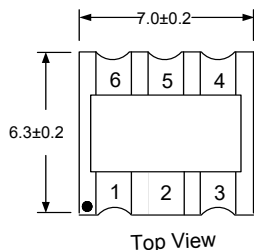
2020-03-06 Rev. 0



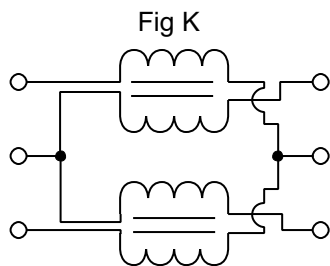
75Ω 2 Way-0° Power Divider

5-1250 MHz

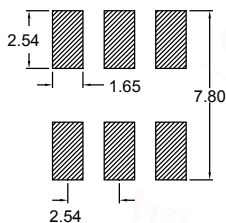
Outline Drawing(mm)



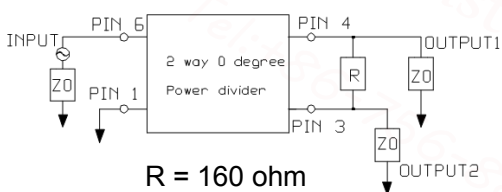
Electrical structure



Recommended layout(mm)



Application circuit



Pin Connections

SUM PORT	6
PORT 1	4
PORT 2	3
GROUND	1
Pin5 connect to pin2 & isolate from ground	2,5

Features

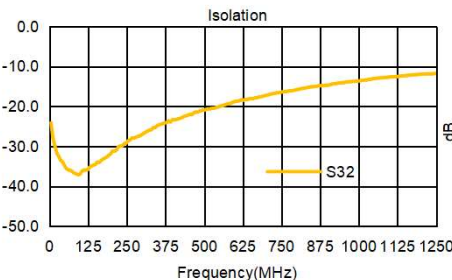
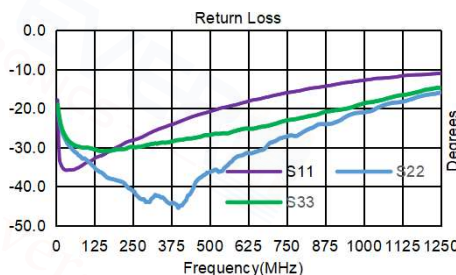
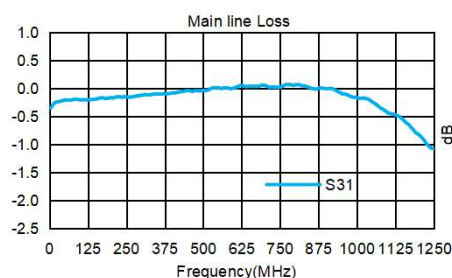
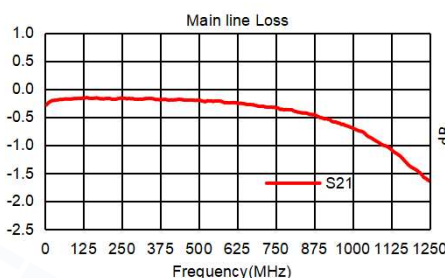
- Input Power:500mW Max
- DC Current:500 mA Max
- 260 °C reflow compatible
- RoHS Compliant and Pb free
- Operating temperature range: - 40 °C to+85 °C
- Storage temperature range: - 55 °C to +100 °C

Applications

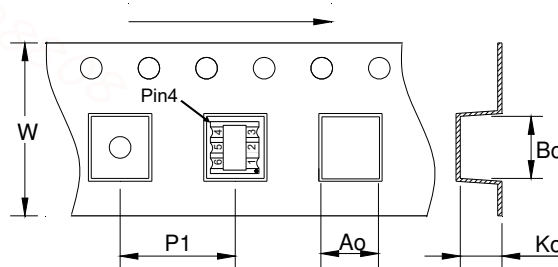
- For Docsis 3.0 & 3.1 Cable Modem.
- For Wideband Push-pull Amplifiers.
- For CATV Amplifiers Module & Set top box.
- For CATV Optical Receivers and Amplifiers.
- For VHF/UHF Transmitters and Push-pull Amplifiers.

Electrical Specifications:TA=25°C, 0dBm, Z0=75Ω

Parameter	Test Conditions	Units	Min	Typ	Max
Main line Loss (Pin6-4)	5-1250MHz	dB	—	1.0	2.0
Main line Loss (Pin6-3)	5-1250MHz	dB	—	0.5	1.5
Input Return Loss	5-1250MHz	dB	10.0	15.0	—
Output Return Loss 1	5-1250MHz	dB	10.0	20.0	—
Output Return Loss 2	5-1250MHz	dB	10.0	20.0	—
Isolation	5-1250MHz	dB	10.0	16.0	—



Carrier Tape Orientation



Tape & Reel Information

Parameter	Units	Value
Qty per reel	PCS	1000
Reel Size	mm	330
Tape Width	mm	16.00
Pitch	mm	12.00
Ao	mm	9.20
Bo	mm	8.10
Ko	mm	3.80