

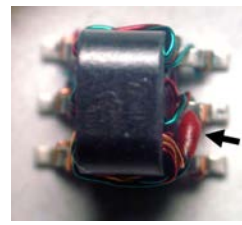
Power Splitter/Combiner

EDK0030-C008022

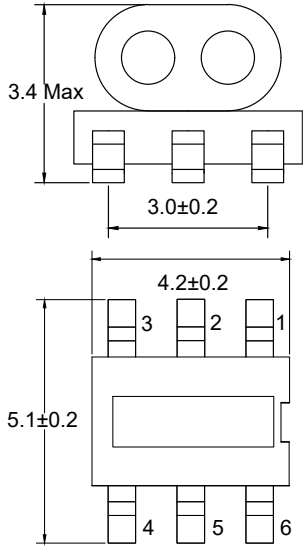
2024-06-20 Rev. 0

75Ω 2 Way-0° Power Divider

5-1000MHz

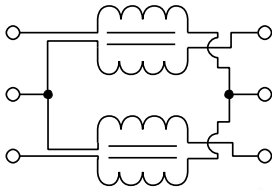


Outline Drawing(mm)

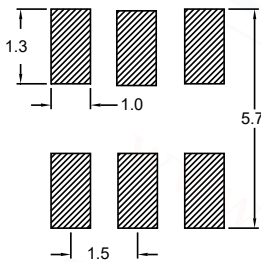


Electrical structure

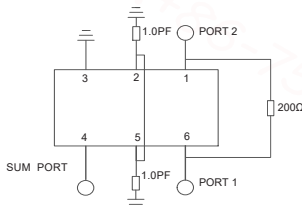
Fig K



Recommended layout(mm)



electrical schematic



Pin Connections

| | |
|----------------------|---------------|
| SUM PORT | 4 |
| PORT 1 | 6 |
| PORT 2 | 1 |
| GROUND | 3 |
| EXT. CAPACITOR 1.0pF | 2 OR 5 TO GND |

Features

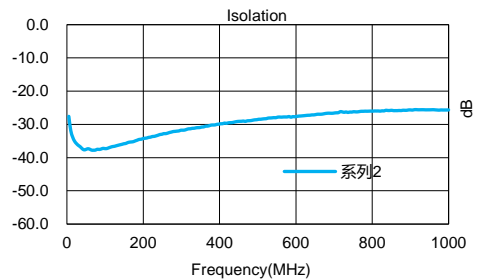
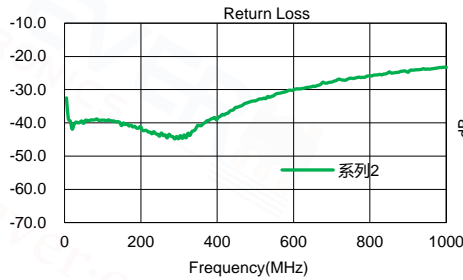
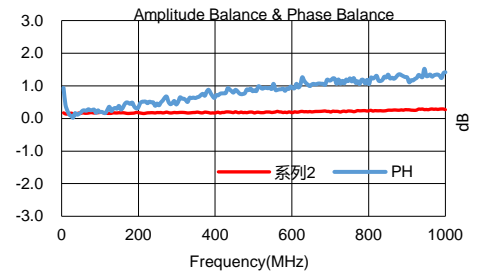
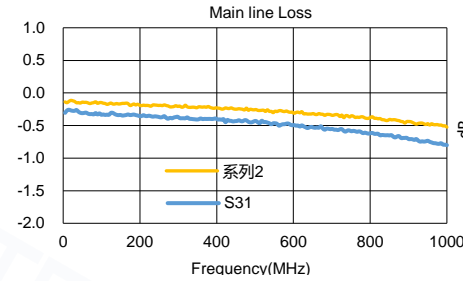
- RF Power:1W Max
- Internal Load Dissipation:0.125W
- Operating temperature range: -40℃ to +85℃
- Storage temperature range: -55℃ to +100℃
- 260℃ Reflow Compatible
- RoHS compliant and lead free

Applications

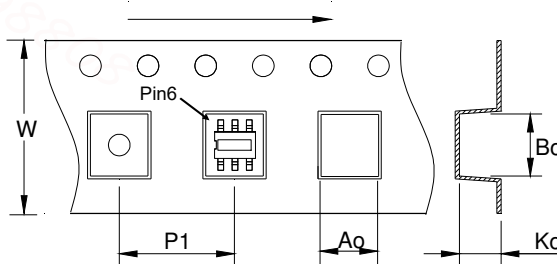
- For Docsis 3.0&4.0Cable Modem.
- For Wideband Push-pull Amplifiers.
- For CATV Amplifiers Module & Set top box.
- For CATV Optical Receivers and Amplifiers.
- For VHF/UHF Transmitters and Push-pull Amplifiers.

Electrical Specifications:TA=25℃, 0dBm, Z0=75Ω

| Parameter | Test Conditions | Units | Min | Typ | Max |
|-------------------------|-----------------|-------|------|------|-----|
| Main line Loss (Pin4-6) | 5-1000MHz | dB | — | 0.5 | 1.8 |
| Main line Loss (Pin4-1) | 5-1000MHz | dB | — | 0.8 | 2.0 |
| Input Return Loss(Pin4) | 5-1000MHz | dB | 17.0 | 24.0 | — |
| Amplitude Unbalance | 5-1000MHz | dB | — | 0.4 | 0.9 |
| Phase Unbalance | 5-1000MHz | dB | — | 2.0 | 6.0 |
| Isolation | 5-1000MHz | dB | 14.0 | 20.0 | — |



Carrier Tape Orientation



Tape & Reel Information

| Parameter | Units | Value |
|--------------|-------|-------|
| Qty per reel | PCS | 2000 |
| Reel Size | mm | 330 |
| Tape Width | mm | 12.00 |
| Pitch | mm | 8.00 |
| Ao | mm | 4.50 |
| Bo | mm | 5.70 |
| Ko | mm | 3.60 |