

Power Splitter/Combiner

EDD0026-F015441

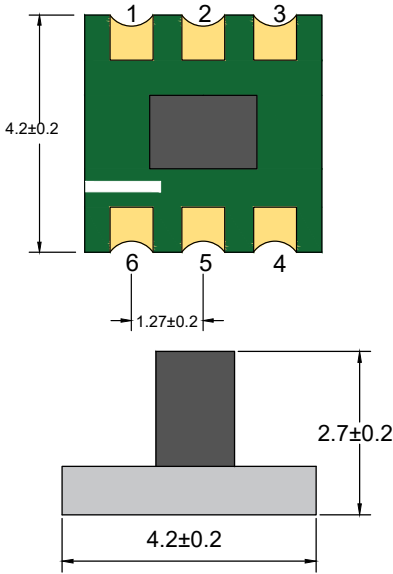
2020-05-27 Rev. 0



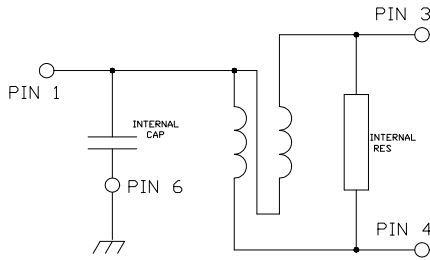
75Ω 2 Way-0° Power Divider

5-2400MHz

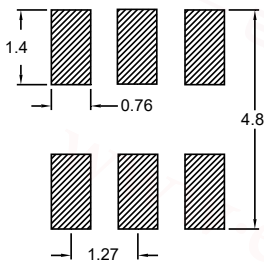
Outline Drawing(mm)



Electrical structure



Recommended layout(mm)



Pin Connections

SUM PORT	1
PORT 1	3
PORT 2	4
GROUND	6

Features

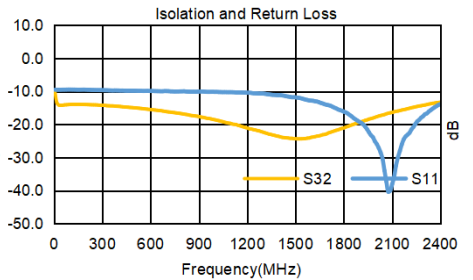
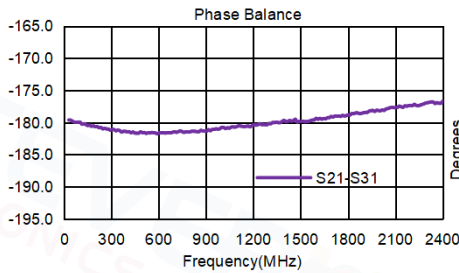
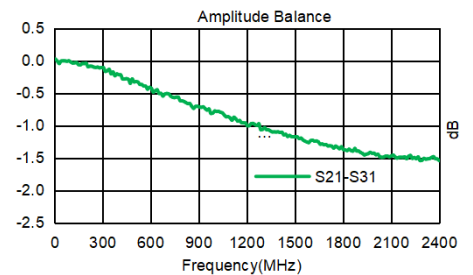
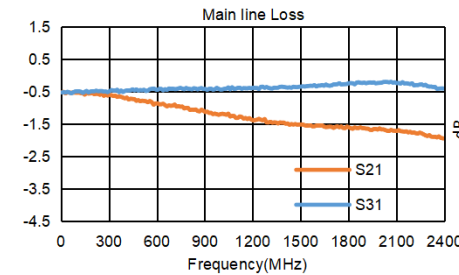
- Operating temperature range: -40°C to +85°C
- Storage temperature range: -55°C to +100°C

Applications

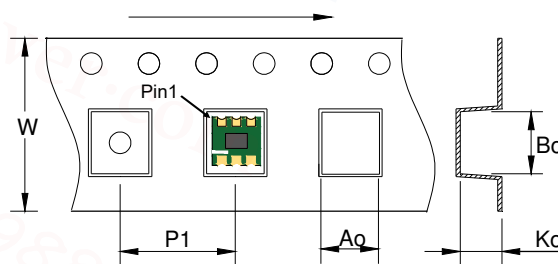
- For catv
- For broadband and wireless communications

Electrical Specifications: TA=25°C, 0dBm, Z0=75Ω

Parameter	Test Conditions	Units	Min	Typ	Max
Main line Loss (Pin1-3)	5-2400MHz	dB	—	2.0	3.0
Main line Loss (Pin1-4)	5-2400MHz	dB	—	0.5	1.5
Input Return Loss	5-2400MHz	dB	8.0	10.0	—
Amplitude Unbalance	5-2400MHz	dB	—	1.5	2.5
Phase Unbalance	5-2400MHz	dB	—	5.0	15.0
Isolation	5-2400MHz	dB	10.0	14.0	—



Carrier Tape Orientation



Tape & Reel Information

Parameter	Units	Value
Qty per reel	PCS	2000
Reel Size	mm	330
Tape Width	mm	12.00
Pitch	mm	8.00
Ao	mm	4.80
Bo	mm	5.10
Ko	mm	3.60