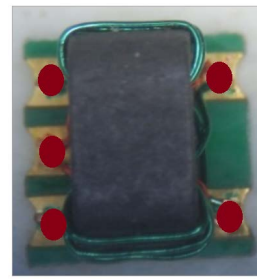


# RF Directional Coupler

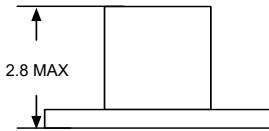
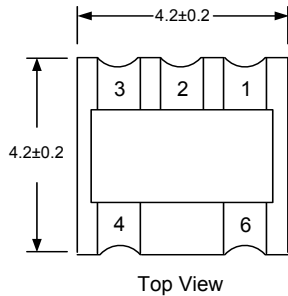
## ECJ1601-C018016

2020-11-26 Rev. 0

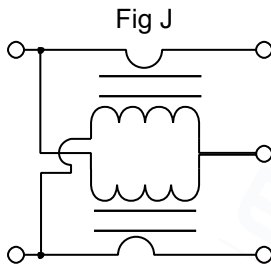
75Ω 16dB Directional Couplers 5-1250MHz



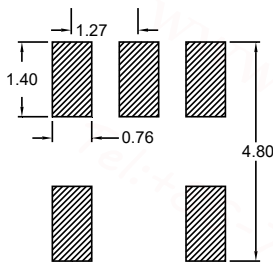
### Outline Drawing(mm)



### Electrical structure



### Recommended layout(mm)



### Pin Connections

Input	1
Coupling	3
Output	6
Ground	2
External 75-Ohm	4

### Features

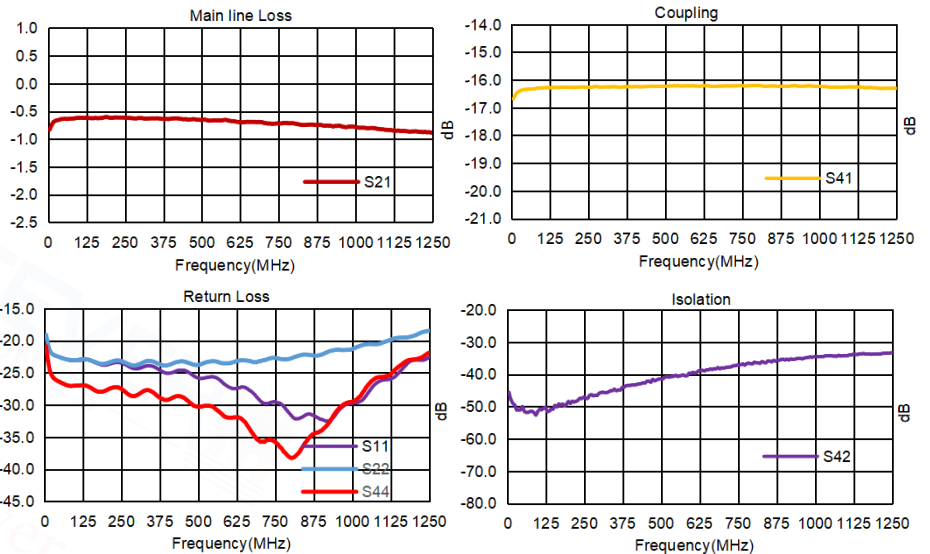
- Operating temperature range: -40℃ to +85℃
- Storage temperature range: -55℃ to +100℃
- RoHS compliant and lead free
- 260℃ Reflow Compatible
- Input Power: 0.5W Max
- DC Current: 50mA Max

### Applications

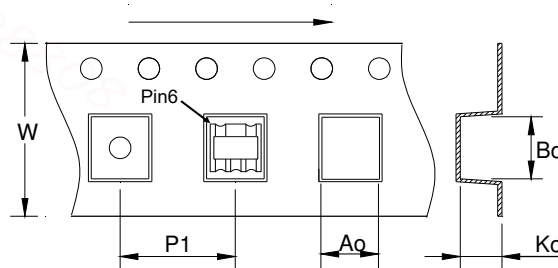
- For Docsis 3.0 & 4.0 Cable Modem.
- For Wideband Push-pull Amplifiers.
- For CATV Amplifiers Module & Set top box.
- For CATV Optical Receivers and Amplifiers.
- For VHF/UHF Transmitters and Push-pull Amplifiers.

### Electrical Specifications:TA=25℃, 0dBm, Z0=75Ω

Parameter	Test Conditions	Units	Min	Typ	Max
Coupling(pin1-3)	5-1250MHz	dB	15.0	16.0	17.0
Main line Loss(pin1-6)	5-1250MHz	dB	—	0.7	1.2
Input Return Loss(pin 1)	5-1250MHz	dB	18.0	25.0	—
Coupling Return Loss(pin3)	5-1250MHz	dB	18.0	25.0	—
Output Return Loss(pin6)	5-1250MHz	dB	18.0	25.0	—
Isolation(pin3-6)	5-1250MHz	dB	30.0	40.0	—



### Carrier Tape Orientation



### Tape & Reel Information

Parameter	Units	Value
Qty per reel	PCS	2000
Reel Size	mm	330
Tape Width	mm	16.00
Pitch	mm	8.00
Ao	mm	4.80
Bo	mm	4.80
Ko	mm	3.50