

# RF Balun Transformer

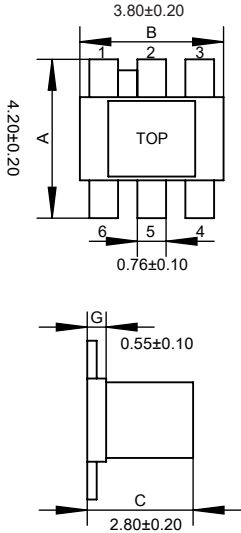
## EBG1-63-C012331

2020-11-30 Rev. 0

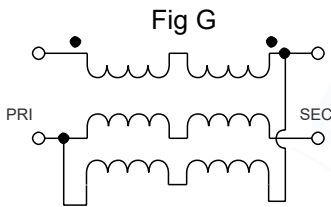


50Ω 1:1 Transmission Line Transformer 10-6000 MHz

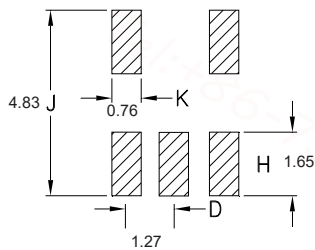
### Outline Drawing(mm)



### Electrical structure



### Recommended layout(mm)



### Pin Connections

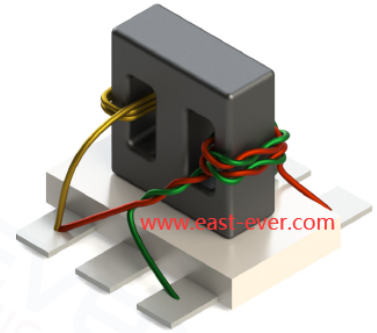
Input	3
Output 1	4
Output 2	6
Ground	2
Not Used	5

### Features

- Operating temperature range: -40°C to +85°C
- Storage temperature range: -55°C to +105°C
- RoHS compliant and lead free
- 260°C Reflow Compatible
- Input Power: 250mW
- DC Current: 30mA

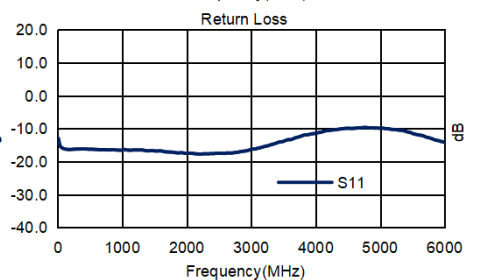
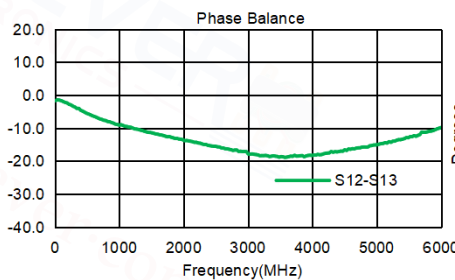
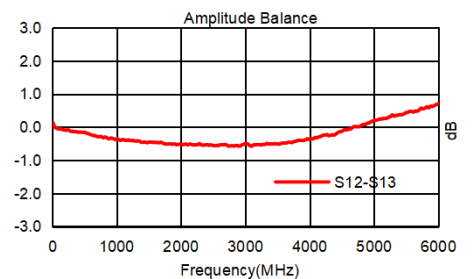
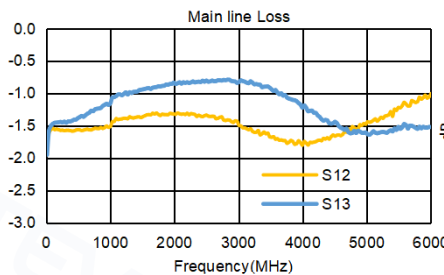
### Applications

- For Motorola Walkie-talkie.
- For Car Streaming Media Rearview Mirror.
- For Broadband and Wireless Communications.
- For Wireless Microphone & Marine Communications.
- For Ideally Suited LTE, Cellular, UMTS, WiFi, WiMAX.
- For Differential Modulator/demodulator and Active Mixers.

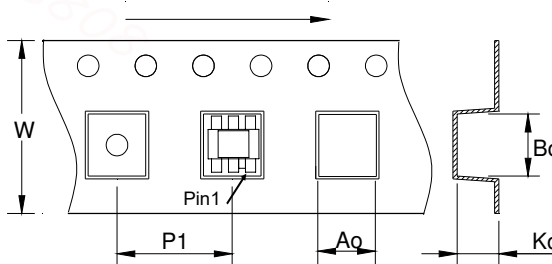


### Electrical Specifications: TA=25°C, 0dBm, Z0=50Ω

Parameter	Test Conditions	Units	Min	Typ	Max
Main line Loss (Pin3-4)	10-6000MHz	dB	—	1.0	2.5
Main line Loss (Pin3-6)	10-6000MHz	dB	—	1.0	2.5
Amplitude Balance	10-6000MHz	dB	0.0	1.5	2.5
Phase Balance	10-6000MHz	°	0.0	15.0	30.0
Input Return Loss(Pin4)	10-6000MHz	dB	10.0	16.0	—



### Carrier Tape Orientation



### Tape & Reel Information

Parameter	Units	Value
Qty per reel	PCS	2000
Reel Size	mm	330
Tape Width	mm	12.00
Pitch	mm	8.00
Ao	mm	4.50
Bo	mm	4.50
Ko	mm	3.20