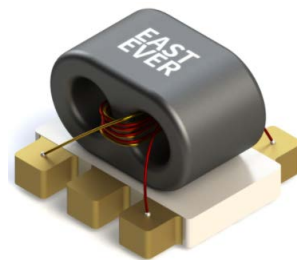


RF Balun Transformer

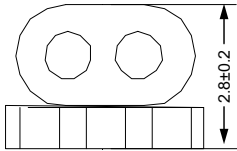
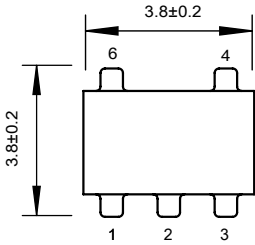
EBE4545-1013003

2020-03-31 Rev. 0



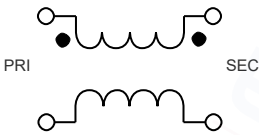
75Ω 1:1 Transmission Line Transformer 45-1250MHz

Outline Drawing(mm)

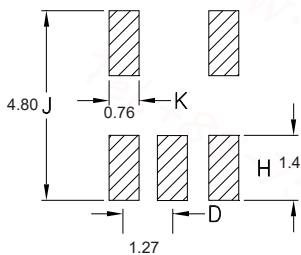


Electrical structure

Fig 0



Recommended layout(mm)



Pin Connections

Input	4
Output 1	3
Output 2	1
Ground	6
Not Used	2,5

Features

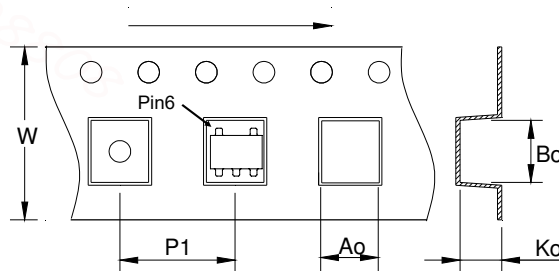
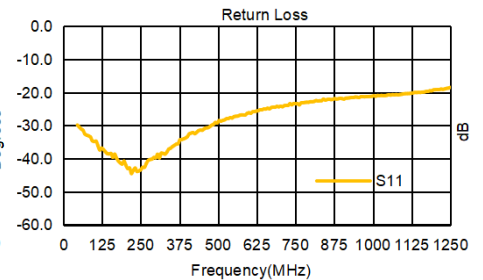
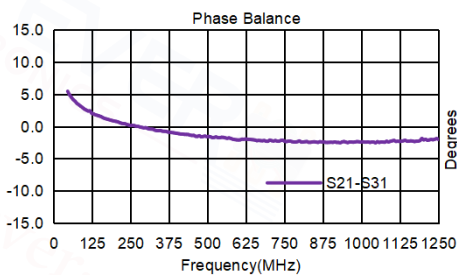
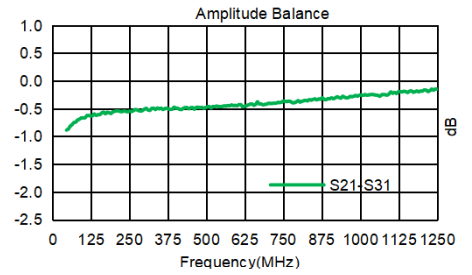
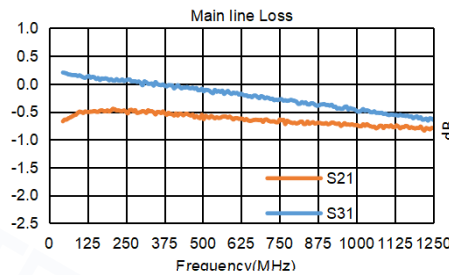
- Operating temperature range: -40℃ to +125℃
- Storage temperature range: -55℃ to +100℃
- RoHS compliant and lead free
- 260℃ Reflow Compatible
- Input Power: 250mW
- DC Current: 30mA

Applications

For Docsis 3.0 & 3.1 Cable Modem.
 For Wideband Push-pull Amplifiers.
 For CATV Amplifiers Module & Set top box.
 For CATV Optical Receivers and Amplifiers.
 For VHF/UHF Transmitters and Push-pull Amplifiers.

Electrical Specifications:TA=25℃, 0dBm, Z0=75Ω

Parameter	Test Conditions	Units	Min	Typ	Max
Main line Loss (Pin4-3)	45-1250MHz	dB	—	0.5	1.G
Main line Loss (Pin4-1)	45-1250MHz	dB	—	0.8	1.G
Amplitude Balance	45-1250MHz	dB	0.0	0.i	1.2
Phase Balance	45-1250MHz	°	0.0	H0	10.0
Input Return Loss(Pin4)	45-1250MHz	dB	16.0	20.0	—



Parameter	Units	Value
Qty per reel	PCS	2000
Reel Size	mm	330
Tape Width	mm	12.00
Pitch	mm	12.00
Ao	mm	4.50
Bo	mm	4.50
Ko	mm	3.20