

# Power Splitter/Combiner

## B008-617DS-6725-B026

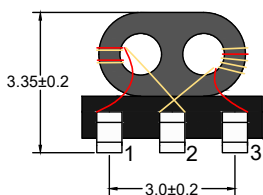
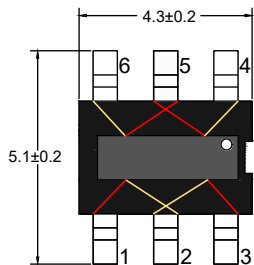
2020-04-16 Rev. 0



75Ω 2 Way-0° Power Divider

5-1250MHz

### Outline Drawing(mm)



### Features

- Input Power: 0.25W Max
- DC Current: 50mA Max
- Operating temperature range: -40℃ to +85℃
- Storage temperature range: -55℃ to +100℃

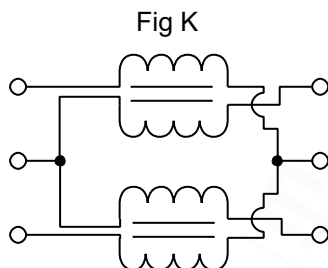
### Applications

- For Docsis 3.0 & 3.1 Cable Modem.
- For Wideband Push-pull Amplifiers.
- For CATV Amplifiers Module & Set top box.
- For CATV Optical Receivers and Amplifiers.
- For VHF/UHF Transmitters and Push-pull Amplifiers.

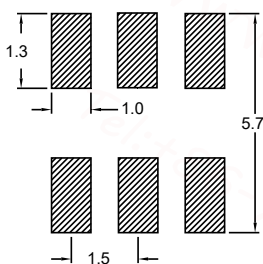
### Electrical Specifications: TA=25℃, 0dBm, Z0=75Ω

Parameter	Test Conditions	Units	Min	Typ	Max
Main line Loss (Pin3-1)	5-1250MHz	dB	—	1.0	2.0
Main line Loss (Pin3-6)	5-1250MHz	dB	—	1.2	2.5
Input Return Loss	5-1250MHz	dB	10.0	20.0	—
Output Return Loss 1	5-1250MHz	dB	10.0	16.0	—
Output Return Loss 2	5-1250MHz	dB	10.0	16.0	—
Isolation	5-1250MHz	dB	16.0	20.0	—

### Electrical structure

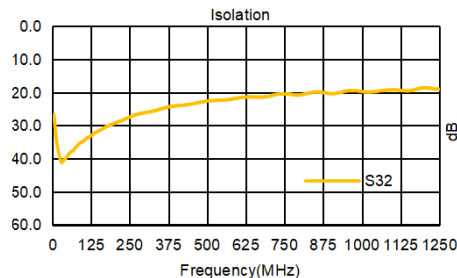
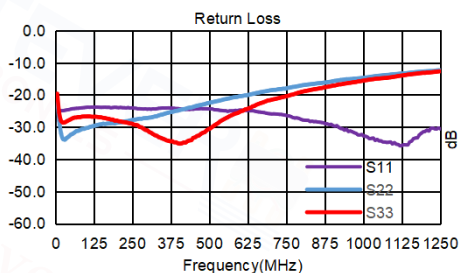
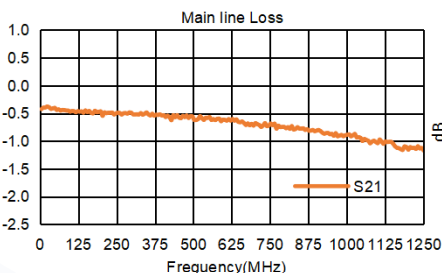


### Recommended layout(mm)

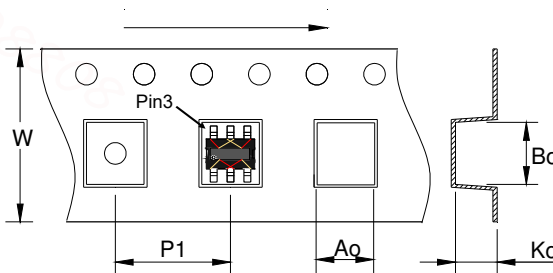


### Pin Connections

SUM PORT	3
PORT 1	1
PORT 2	6
GROUND	4
External 1.5 pF Capacitor GROUND	2, 5



### Carrier Tape Orientation



### Tape & Reel Information

Parameter	Units	Value
Qty per reel	PCS	2000
Reel Size	mm	330
Tape Width	mm	12.00
Pitch	mm	8.00
Ao	mm	4.50
Bo	mm	5.30
Ko	mm	3.60